

A gentle journey into Christian Healing

with Don and Rae Martin TSSF

Explore Francis's compassion and Christ's healing. This retreat may give you confidence to take it back to your parish and being your own ministry of healing and wholeness.

Don and Rae are Third Order Franciscans who have had a strong link with the Friary for many years.



Hilfield Friary

Set in 43 acres on the edge of the Dorset Downs and overlooking the beautiful Blackmore Vale; Hilfield Friary is a Community house of the Anglican Society of St Francis – who were founded here in the 1920s.

Since 2007, the Franciscan Brothers have been joined by lay men and women, including young people, who are sharing in the life, work and prayer of the Friary. Our particular focus is on Justice, Peace and the Integrity of Creation arising from our Franciscan vocation.

During this weekend you will be staying in Bernard, Leo or Juniper House, named after the early Companions of St Francis. Your accommodation is quiet and comfortable, warm and well-appointed.

Your meals will be taken either in Juniper House or the Refectory and participants are invited to help with both the preparation and washing up. It is sometimes possible to join the Community for Sunday lunch should numbers permit.

During the weekend you are welcome to share in the regular Services in the Community Chapel – although there is no requirement for you to do so.



A gentle journey into Christian Healing

To book: Send the completed booking form below to:

The Guest Co-Ordinator, The Friary, Hilfield
Dorchester, DT2 7BE

or contact us for further information:

Telephone 01300 341741

hilfieldssf@franciscans.org.uk

Name

Address

Telephone

E-Mail

I enclose a non-refundable deposit of £20 to secure my booking (please make your cheque payable to 'Society of Saint Francis').

The suggested donation for the weekend is £150 to include all food and accommodation. We are willing to accept less if this figure is not possible for you as we have a limited number of subsidised bursaries. We ask people to Gift Aid their donation wherever possible.*

Please let us know if you have any dietary or other requirements.

Please tell us your transport details.

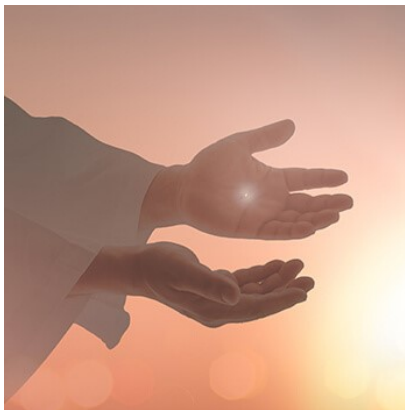
I would like to be on the secure database to receive information about The Hilfield

☐

Friary Community and its programme.

* We do not make a charge for guests to stay with us but any donation towards our life and ministry is gratefully received. Our ministry includes our work with the poor and marginalised in our country, as well as promoting Franciscan values of justice, peace and integrity of creation. We estimate that it costs £50 to simply host a guest per night stayed (for courses this is a larger amount) but all your contributions enable our work to go on, and to welcome those with little or no income.

Thank you for all your support and encouragement in many ways, however much you are able to give it is important to us that you come and share in our community life.



Arriving by Train

The nearest stations are Yetminster (request stop) from Bristol; or Sherborne from London Waterloo. We can collect you from these stations if you let us know (we ask for a £6 donation to cover the cost of petrol).

Arriving by car

The best way to reach Hilfield is the following:

From Yeovil Take A37 Yeovil to Dorchester road. After approximately 8 miles turn left at Wardon Hill (Signposted Batcombe, Minterne Magna). At the T Junction turn right. Travel approximately 2.5 miles take second turn on the left. The friary is at the bottom of the lane.

From Dorchester take the A 37 Dorchester to Yeovil Road After approximately 9 miles at Wardon Hill turn right (signposted Batcombe, Minterne Magna). At the T junction turn right. Travel approximately 2.5 miles take the second turn on the left. The friary is at the bottom of the lane.



A gentle journey into Christian Healing

With Don and
Rae Martin TSSF



Friday 19th to
Sunday 21st July 2024